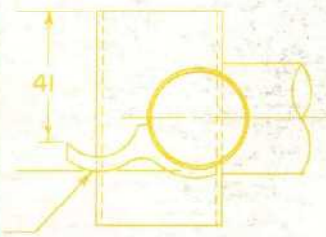
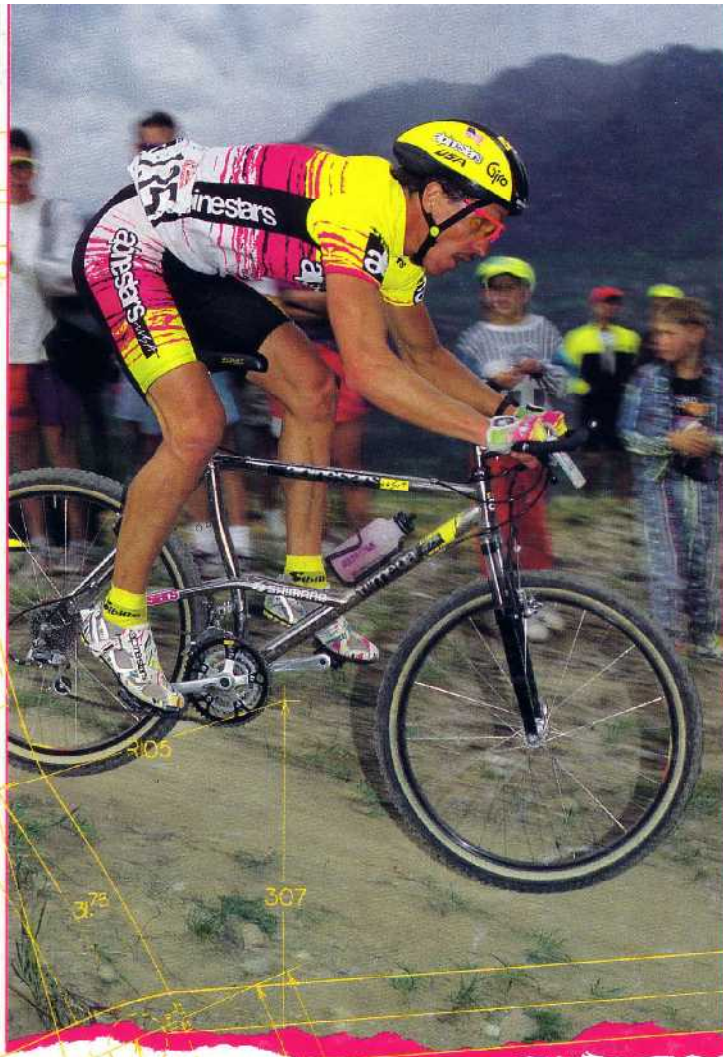


# '91



SECTION B-B

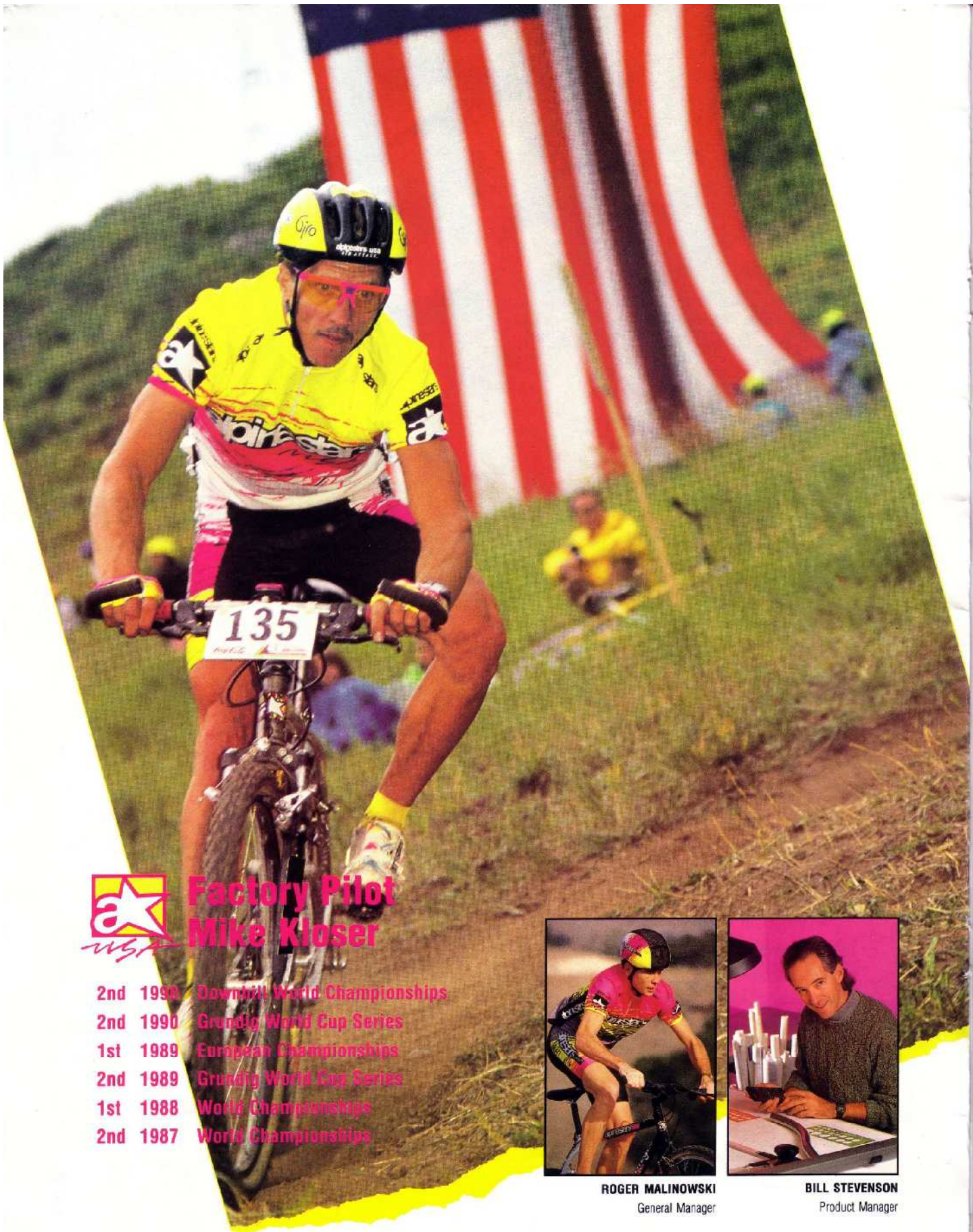
 **levated**  
 **ersize**  
 **ystem™**

**Defining the Mtn. Bike of the Future**

**alpinestars**



40 Ø BSA THREADED

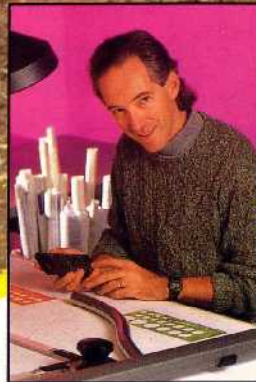


## Factory Pilot Mike Kloser

- 2nd 1990 Downhill World Championships
- 2nd 1990 Grandig World Cup Series
- 1st 1989 European Championships
- 2nd 1989 Grandig World Cup Series
- 1st 1988 World Championships
- 2nd 1987 World Championships



**ROGER MALINOWSKI**  
General Manager



**BILL STEVENSON**  
Product Manager



### El-e-vat-ed

adj., raised  
esp. above  
the ground.



### Over-size

n., larger than  
the usual or  
normal size.



### Sys-tem™

n., elements  
combined to work  
as a whole unit.

## The Team Behind the Revolution

Alpinestars USA has a simple vision: to build the best off-road product in the world. We've learned one great lesson in our 28 years of building winning-performance equipment for the world's best off-road champions: you can never make the best unless you get the best to help you. This is what *Mountain Bike Action* said about two key members of our team: "The difference is in the men Alpinestars USA hired to design the bikes. Bill Stevenson and Roger Malinowski were two of the top dogs at Fisher Mountain Bikes years ago. They have been designing and spec'ing bikes for years, and they represent some of the slickest technical minds in the industry." It's hands-on experience like Stevenson's 15 years as a master designer and craftsman of custom racing frames, complemented by Malinowski's 10 years of racing experience and race team management, which prompted such recognition. This background of first-hand experience gave Stevenson the insight to understand the conventional frame's limitations and to crystallize his vision of the ultimate mountain bike. No design team is complete without a professional test pilot. And there's none better than Mike Kloser, who tested our designs while en route to *silver medals* in the Grundig World Cup Series and the Downhill World Championships.

Alpinestars USA has one commitment: to define the mountain bike of the future. We discovered the key to expanding the mountain bike's limits — EOS™, Elevated Oversize System. Our Alpinestars USA design team presents the mountain bikes of the future.

ALPINESTARS USA a un but simple: construire le meilleur produit tout-terrain du monde. Nous avons acquis une grande expérience en 28 ans de confection d'équipements performants pour les meilleurs champions du monde tout-terrain: On n'obtient jamais le meilleur, excepté si l'on prend les meilleurs avec soi. C'est ce que MOUNTAIN BIKE ACTION magazine a dit de deux membres de notre team: "la différence est dans les hommes qu'ALPINESTARS USA a choisis pour créer leurs vélos. BILL STEVENSON et ROGER MALINOWSKI étaient les meilleures recrues de FISHER MOUNTAIN-BIKE. Ils sont designers et techniciens depuis des années, et ils font parties des ingénieurs les plus habiles de l'industrie."

Ces expériences mises en commun; 15 années pour STEVENSON comme maître designer et constructeur de cadres de compétition, et 10 ans d'expérience course pour MALINOWSKI en tant que manager et coureur du team, leur ont procuré un savoir hors pair. Les grandes connaissances acquises ont donné à STEVENSON la perspicacité pour comprendre les limites du cadre conventionnel et cristalliser sa vision du MOUNTAIN BIKE.

Aucun team de designers n'est complet sans un pilote professionnel testeur. Et il n'y a personne de mieux que MIKE KLOSER, qui a testé nos modèles avec pour résultat la médaille d'argent dans le GRUNDIG WORLD CUP, et dans le championnat du monde de descente.

Alpinestars USA a pour engagement: créer le MOUNTAIN BIKE de l'avenir. Nous avons découvert la clé du développement des limites du mountain bike — EOS™, ELEVATED OVERSIZE SYSTEM — Notre team ALPINESTARS USA présente le mountain bike du futur.

Alpinestars USA ha una visione chiara: costruire i migliori prodotti per il fuoristrada al mondo.

Abbiamo imparato molto nei nostri 28 anni nel costruire equipaggiamento vincente per i migliori campioni del fuoristrada al mondo: non si può costruire il meglio se non si ha l'aiuto dei migliori. Questo è quanto Mountain Bike Action ha detto al riguardo di due membri chiave del nostro team: "La differenza è negli uomini che Alpinestars ha assunto per disegnare le biciclette. Bill Stevenson e Roger Malinowski sono stati due elementi fondamentali nell'evoluzione della mountain bike. Hanno progettato bici da fuoristrada per anni, e sono due tra i cervelli più tecnicamente evoluti di tutto il settore."

E tale riconoscimento viene dall'esperienza di prima mano, come i 15 anni di Stevenson come disegnatore e realizzatore di telai speciali da competizione, completata dai 10 anni di esperienza di Malinowski in gara e come team-manager.

Questo back-ground di conoscenze dirette ha dato a Stevenson la capacità di capire le limitazioni dei telai convenzionali e di realizzare la sua visione della mountain bike assoluta. Un team di progettazione non è completo senza un pilota-tester professionista. E nessuno è meglio di Mike Kloser in questo, che ha collaudato le nostre realizzazioni conquistando la medaglia d'argento nella Coppa del Mondo Grundig e nel Campionato del Mondo di discesa.

Alpinestars USA ha un obiettivo: definire la mountain bike del futuro. Abbiamo scoperto la chiave per ampliare i limiti della mountain bike — EOS™, Elevated Oversize System. Il design team Alpinestars USA presenta le mountain bike del futuro.

Wir von Alpinestars haben ein klares Ziel: wir wollen die besten Offroad-Produkte der Welt konstruieren. Seit 28 Jahren stellen wir die Ausrüstung her, mit der die Champions im Gelände siegen. Dabei haben wir eines gelernt: Das Beste schafft man nur mit der Hilfe der Besten. Das Fachmagazin "Mountain Bike Action" schreibt über zwei maßgebende Mitarbeiter unseres Teams: "Die Männer, die bei Alpinestars USA für das Design der Mountain Bikes verantwortlich sind machen den Unterschied aus. Bill Stevenson und Roger Malinowski. Sie sind schon vor Jahren zwei der Topleute bei Fisher Mountain Bikes gewesen. Beide verfügen über jahrelange Erfahrung in der Planung und Konstruktion von Mountain Bikes. Es sind zwei der raffiniertesten Techniker der ganzen Branche." Wenn sich praktische Erfahrung gegenseitig ergänzt, wie etwa bei Stevenson, der fünfzehn Jahre lang als Chefdesigner und Rahmenkonstrukteur Rennräder in Maßanfertigung herstellte und Malinowski, der auf zehn Jahre Rennerfahrung als Aktiver und als Rennteam-Manager zurückblicken kann, dann erwirbt man sich eine solch blendende Reputation. Vor dem Hintergrund dieser Erfahrung aus erster Hand stellte Stevenson fest, daß dem herkömmlichen Rahmenkonzept Grenzen gesetzt sind und er entwickelte seine Vision vom perfekten Mountain Bike. Kein Design-Team kommt ohne professionellen Testfahrer aus. Es gibt keinen geeigneteren als Mike Kloser, der unsere Konstruktionen auf seinem Weg zur Silbermedaille in der Grundig World Cup Serie und bei den Downhill-Weltmeisterschaften testete.

Wir von Alpinestars USA haben uns ein Ziel gesetzt: das Mountain Bike der Zukunft zu entwickeln. Wir haben den Schlüssel entdeckt, der die Grenzen des Mountain Bikes erweitert — das EOS (Elevated Oversize System). Unser Design Team präsentiert die Mountain Bikes der Zukunft!

# Elevated Over

## Defining the Mt. Bike of the Future

"EOS" Elevated Oversize System, the "secret" to the system is the sum of its parts. What makes our system really work is just that — it is a totally integrated system. MOUNTAIN BIKE ACTION said "Elevated and Oversize were 1989's top innovations." But if not combined with the right geometry and the other key elements of the complete bike they are as worthless as most of the past Hype you've read about them. EOS incorporates the best of the past while defining the Mt. Bike of the future.

### Elevate Your Performance

Our oversized 15.9" chainstays break the 16" barrier in a big way. Everyone dreams about a climbing edge, we've just created yours.

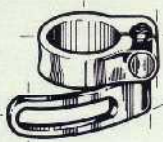


Alpinestars USA New Investment Cast Derailleur Hanger - Offers improved strength and durability



I think we've made our point.

EOS is a totally integrated system. If after all this you think we're trying to take you for a ride ... you're absolutely right! It's the only way to feel how good it really is.



New Investment Cast Stainless Steel Seat Collar With Integral Q.R. - The only way to get you up and down.

Geometry - We got an "A" on this test.

Curved Seat Tube - Allows the reduction of chainstay length without sacrificing tire clearance.



# size system™

## Oversize Your Thinking

The goal is to maximize the properties of the tubing in a frame that is as light as possible while maintaining strength and rigidity. Our special oversize tubing capitalizes on the optimum ratios between rigidity and weight.

1-1/4" Headset - 33% more ball bearings for improved headset life and allows for the Megalite Stem and Fork System.

New Megalite Oversize 7005 Aluminum Handlebar - We've increased the diameter from 25.4mm to 28.6mm and reduced the wall thickness to yield a lighter, stronger bar.



New Megalite Oversize 7005 Aluminum Stem - Our oversize thin wall design yields the ultimate combination of strength and lightness.

## Steer Clear

The only answer to a total system is a complete redesign from the tires up. The combination of our new Megasized Aluminum Fork, with the Megalite Aluminum Stem and 7005 series Aluminum Oversize Handlebars, gives true meaning to "lighter, stronger and quicker."



New Megalite Oversize 7005 Aluminum Fork - Our Aluminum Fork represents the latest technology in fork design. The cold forged aluminum dropouts are the perfect end to this innovation.

alpinestars



Alpinestars U.S.A.

USA





## Ti-Mega™

Simply stated, the Ti-Mega is the most technologically advanced mountain bike in the world – period. At the heart of this technological breakthrough is the EOS™ frame system. We've developed a revolutionary design consisting of radically short 15.9" chainstays and curved seat tube for the ultimate combination of power climbing, traction, and tire clearance. Combine these features with a titanium frame, fork, handlebar, stem, and seatpost made of oversize titanium tubing (renowned for its tremendous strength and light weight), and you have every racer's dream machine. Well, dream no more – the Ti-Mega EOS™ is your competition's worst nightmare.

Pour l'énoncer simplement le TI MEGA est le mountain bike le plus avancé technologiquement dans le monde. Le système EOS™ du cadre est au coeur du bond en avant technologique. Nous avons développé un design révolutionnaire comprenant une longueur de la base courte de (403 MN), d'un tube de selle incurvé pour la meilleure combinaison de puissance en montée, la meilleure adhérence, et pour le dégagement du pneu. Cette combinaison de cadre titane avec 1 fourche, 1 guidon, 1 potence et 1 tige de selle faite de tube aluminium oversize (reconnu pour sa solidité extraordinaire et sa légèreté) vous offrent la machine dont rêve chaque coureur. Le TI MEGA EOS™ donnera à vos concurrents de véritables cauchemars.

Detto semplicemente, la Ti-Mega è la mountain bike più tecnologicamente avanzata al mondo. Il cuore di questa rivoluzione tecnologica è il telaio con Sistema EOS™. Abbiamo sviluppato una struttura con caratteristiche assolutamente innovative, che consiste di un carro posteriore eccezionalmente corto (403 mm.) e un tubo reggisella curvo per la massima combinazione di potenza in salita, trazione e spazio attorno al pneumatico per evitare accumulo di terra e fango. Combinando queste caratteristiche con il telaio in titanio, la forcella, il manubrio con il supporto e il tubo di supporto della sella fatti in tubi di titanio oversize (rinomato per la sua tremenda forza e basso peso) abbiamo realizzato il sogno di ogni appassionato e di tutti quanti gareggiano. E la Ti-Mega sarà il peggior incubo per tutti i tuoi avversari.

Mit einem Wort: das Ti-Mega ist eines der technologisch fortschrittlichsten Mountain Bikes der Welt-Punkt. Das Kerstück für diesen technologischen Durchbruch bildet das EOS-Rahmen-System. Wir haben ein revolutionäres Design entwickelt mit extrem kurzen 40,4 cm-Kettenstreben und einem gebogenen Sitzrohr für eine optimale Kombination aus Steigfähigkeit, Traktion und Reifenfreiheit. Wenn nun diese Features mit einem Titan-Rahmen sowie Gabel, Lenker, Vorbau und Sattelstütze aus Oversized Titanium Rohren (bekannt für unglaubliche Festigkeit und geringes Gewicht) verbunden werden, dann haben Sie das Offroad Race Bike von dem jeder Rennfahrer träumt. Schluß mit den Träumen — das Ti-Mega-EOS wird der schlimmste Alptraum Ihrer Konkurrenten sein.





## **A**l-Mega™ XT

Al-Mega XT utilizes the best innovations of the past, while combining the superior technology and craftsmanship of the present to give you the mountain bike for the future. At the heart of our EOS™ System is an all-aluminum frame designed around a front triangle of 7005 Series Aluminum Oversize "Mega Tubing." By pushing the material to its optimum dimensions, our tube diameters and wall thicknesses represent the strongest combination yet — without adding weight. The EOS™ System's all-aluminum rear triangle with its 15.9" chainstay design provides the key to traction for those ultimate climbs while giving the perfect blend of tire clearance and rigidity. To complete the system, we've also redesigned the front end to take advantage of the strength and light weight of oversize aluminum. This year you'll find an oversize (28.6 mm) handlebar, stem and fork — all made of 7005 aluminum tubing. With innovations like these, you can see why this is such a great bike.

AL MEGA XT possède les meilleurs innovations du passé, qui combinées avec l'évolution de la technologie et du savoir nous donne le mountain bike du futur. Au coeur de notre système EOS™, il y a un cadre aluminium dessiné autour du triangle avant 7005 série OVERSIZE ALUMINIUM MEGA TUBING. En poussant les matériaux dans leurs dimensions optimums, notre épaisseur du tube représente encore la combinaison la plus solide, sans augmentation de poids. Le système EOS™ tout aluminium du triangle arrière avec le design de la longueur de base haute arrière de 403 mm, donne une très bonne adhérence pour les ascensions extrêmes et donne un parfait dégagement du pneu, et de la rigidité. Pour compléter le système nous avons aussi redessiné la partie avant pour profiter de la puissance et de la légèreté de l'OVERSIZE ALUMINIUM. Cette année vous aurez donc un guidon (28,6 mm), une potence, une fourche oversize, le tout en tube aluminium 7005. Avec des innovations comme celles-là, vous comprenez pourquoi c'est un si bon vélo.

La AL-MEGA XT utilizza le migliori innovazioni di questi ultimi anni, combinando la massima tecnologia e tecnica costruttiva attuale. Il risultato è la mountain bike del futuro. Al cuore del nostro Sistema EOS™ vi è il telaio completamente in alluminio disegnato attorno ad un triangolo principale in Alluminio Oversize Serie 7005 "Mega Tubing." Utilizzando il materiale alle sue dimensioni ideali, il diametro e lo spessore dei nostri tubi rappresentano la combinazione ottimale per la massima robustezza, senza aggiungere peso. Il triangolo posteriore EOS™ System tutto in alluminio, con soli 403 mm. di lunghezza del carro permette di ottenere la massima trazione nelle salite più ripide, fornendo la perfetta combinazione di rigidità e spazio attorno al pneumatico. Per completare il sistema, abbiamo ridisegnato anche la parte anteriore per sfruttare la resistenza ed il peso contenuto dell'alluminio oversize. Quest'anno il manubrio, il suo attacco e la forcella sono tutti costruiti in tubi di alluminio 7005 oversize (28,6 mm.). Con innovazioni come queste, appare chiaro perché questa è la mountain bike del futuro.

Im AL-MEGA XT vereinen sich die besten Innovationen der Vergangenheit mit der überlegenen Technologie und handwerklichen Präzisionsarbeit der Gegenwart zum Mountain Bike der Zukunft. Das Herzstück unseres EOS-Systems bildet ein Voll-Aluminiumrahmen, der um die drei Hauptrohre aus "Oversized Mega" Alu-Rohr der Serie 7005 konstruiert ist. Durch die optimalen Materialabmessungen erzielen wir die bisher günstigste Kombination aus Rohrdurchmesser und Wandstärke — ohne Mehrgewicht. Die 40,4 cm kurzen Kettenstreben, gemäß den Gesetzen des EOS-Systems auch aus Aluminium gefertigt, bieten die beste Traktion für extreme Steigungen und die optimale Mischung aus Reifenfreiheit und Rahmen-StEIFheit. Vervollständigt haben wir das System mit einer neukonstruierten Vorderbau, der die Vorteile des stabilen und leichten oversized Aluminiums ausnutzt. Die Saison 1991 bringt Lenker, Vorbau und Gabel aus oversized 7005 Aluminiumrohr. An solchen Innovationen können Sie erkennen, daß dies ein großartiges Mountain Bike ist.





## **A** I-Mega™ DX



The EOS™ System continues with Al-Mega DX, which shares the same winning frame technology, exceptional design, geometry, materials and construction. The Al-Mega DX has our innovative curved seat tube for tire clearance and bottom bracket rigidity. It also features Megalite 28.6" Oversize Aluminum Handlebars and Oversize Aluminum Stem, while driven by our Oversize Megadrive straight-blade fork. No race bike is complete without a great set of rims and tires. Our Al-Mega DX is no exception, running Ritchey race-proven Megabite Hard Drive Tires with Ritchey Vantage Comp Rims. Our EOS™ System makes Al-Mega DX the perfect choice for your first race bike.

Le système EOS CONTINUE AVEC AL MEGA DX, DONT LE CADRE A LA MEME TECHNOLOGIE, LE MEME DESIGN EXCEPTIONNEL, LA MEME GEOMETRIE, LES MEMES MATERIAUX ET LA MEME CONSTRUCTION. La partie basse du tube reliant la selle de l'ALU DX est incurvée, ce qui permet le dégagement du pneu et assure la rigidité de la boîte de pédalier. Ses autres caractéristiques sont un guidon Mégalite (28,6) oversize aluminium et une potence aluminium oversize, ce qui nous amène à notre Megadrive Oversize fourche, coupé droit. Aucun vélo de compétition n'est complet sans un excellent ensemble de jantes et pneus. Notre MEGA DX n'est pas une exception, il possède les pneus Megabite HARD DRIVE RITCHEY qui ont déjà fait leurs preuves en course avec aussi les jantes RITCHEY VANTAGE COMP. Notre EOS™ Système fait de AL MEGA DX le choix parfait pour votre 1er vélo de course.



Il Sistema EOS™ continua con la Al-Mega DX, che condivide la stessa tecnologia vincente del telaio, eccezionale design, geometrie, materiali e costruzione. La Al-Mega DX ha l'innovativo tubo reggisella curvo, per lasciare spazio ottimale attorno al pneumatico e dare maggiore rigidità alla zona del movimento centrale. Inoltre presenta il manubrio "Megalite" ed il suo supporto in alluminio oversize (28,6 mm.) guidati dalla forcella Oversize Megadrive a steli dritti. Una mountain bike da competizione non è completa senza cerchi e gomme superiori. La Al-Mega DX non fa eccezione, utilizzando pneumatici da gara Ritchey Megabite Hard Drive su cerchi Ritchey Vantage Comp. Il Sistema EOS™ fa della Al-Mega DX la scelta perfetta per la tua prima bici da gara.

Das EOS-System setzt sich im Modell Al-Mega DX fort, das über die gleiche Rahmen-Spitzen-technologie, das identische, hervorragende Design und Material sowie die gleiche Geometrie und Konstruktion verfügt. Das Al-Mega DX hat unser innovatives, gebogenes Sitzrohr für ausreichende Reifenfreiheit und Steifigkeit des Tretlagers. Hinzu kommt der oversized Megalite Aluminiumlenker, der oversized Aluminiumvorbau und die oversized Megadrive Gabel mit geraden Gabelscheiden. Kein Wettkampf-Bike ist komplett ohne die passenden Felgen und Reifen. Das gilt auch für unser Al-Mega DX, es rollt auf rennerprobten Ritchey Megabite Hard Drive Reifen und Ritchey Vantage Comp. Felgen. Unser EOS-System macht das Al-Mega DX zur besten Wahl für Ihr erstes Renn-Mountain Bike.





## ro-Mega™ DX

Our EOS™ System redefines the chromoly bike of the future. With this system, the Cro-Mega DX sets the standard for judging all other chromoly bikes. The Cro-Mega DX shares the racing geometry, frame technology and design of the Al-Mega racing series mountain bikes. The EOS™ System represented in the Elevated Oversize Chromoly frame – with its elevated rear triangle featuring 15.9" chainstays, curved seat tube, Oversize Aluminum Handlebars, Oversize Aluminum Stem and Megadrive Fork – is state of the art in 100% chromoly.

Notre système EOS™ est le vélo chromoly du futur. Avec ce système, le CRO MEGA DX est le modèle standard, pour juger tous les autres vélos chromoly. Le RO MEGA DX a la même géométrie course, la même technologie du cadre et design que la série VTT AL MEGA RACING. Le système EOS™ présenté dans les cadres chromoly elevated oversize. Avec son triangle arrière base relevée de (403 MN), le tube de selle incurvée, le guidon aluminium oversize, la potence aluminium oversize et la fourche mégadrive 100% chromoly.

Il nostro Sistema EOS™ ridefinisce la mountain bike in acciaio cromo-molibdeno del futuro. Con l'Elevated Oversize System la Cro-Mega DX stabilisce lo standard di paragone per tutte le altre biciclette in acciaio. La Cro-Mega DX condivide la stessa geometria da competizione, tecnologia del telaio e design della serie Al-Mega da gara. Il Sistema EOS™ rappresentato nel telaio Oversize, con carro posteriore elevato di soli 403 mm. di lunghezza, tubo reggisella curvo, manubrio e suo supporto in alluminio oversize e forcella Megadrive, rappresenta lo "stato dell'arte" nelle mountain bike in 100% cromo-molibdeno.

Unser EOS-System verändert das Chromoly Bike der Zukunft. Mit diesem System wird das Cro-Mega DX zum Standard, an dem sich andere Chromoly Bikes messen lassen müssen. Das Cro-Mega verfügt über die identische Renngeometrie, Rahmentechnologie und Design der Wettkampf-Mountain Bikes der Serie Al-Mega. Das EOS-System zeigt sich in dem Elevated-Oversize Chromoly Rahmen mit seinen hochgezogenen Kettenstreben, dem verkürzten Hinterbau mit 40,4 cm Länge, mit dem gebogenen Sitzrohr, dem oversized Aluminiumlenker und der Megadrive Gabel. Das ist der Stand der Technik in 100% Chromoly.



7



## Cro-Mega™ LX

Cro-Mega LX stands out as the best in its class, designed with the same Elevated Oversize System as our race-proven series. Cro-Mega LX begins with our Megalite Aluminum bars, Oversize Chromoly Stem and Megadrive Fork, and ends with an elevated rear triangle featuring 15.9" chainstays with a curved seat tube for maximum traction and tire clearance. The investment-cast rear dropouts, along with Ritchey tires and Araya rims, represent the detail given in creating the finest LX bike available.

CRO MEGA LX apparait comme le meilleur de sa classe. Dessiné avec le même système ELEVATED OVERSIZE que les modèles compétition; CRO MEGA LX commence avec des barres alu Mégalite, une potence Chromoly Oversize, une fourche Megadrive, et fini avec un triangle arrière de base élevé de 403 Mn, un tube de selle incurvé pour une adhérence maximum et un bon dégagement de la roue. Les pneus RITCHEY, et les jantes ARAYA, sont les détails qui font de cette création le vélo le mieux fini du marché.

La Cro-Mega LX si presenta come il meglio nella sua classe, disegnata con lo stesso Elevated Oversize System della nostra serie da gara. La Cro-Mega LX comincia con il manubrio Megalite in alluminio, il suo supporto in cromo-molibdeno oversize e la forcella Megadrive, e si completa con il triangolo posteriore elevato con un carro di soli 403 mm. e tubo reggisella curvo per la massima trazione e spazio attorno al pneumatico. I forcellini posteriori stampati, con le gomme Ritchey e cerchi Araya rappresentano la cura posta nel creare la migliore mountain bike con componenti LX sul mercato.

Das Cro-Mega LX mit dem gleichen Elevated Oversize System wie in der rennerproben Serie ist der Primus seiner Klasse. Das Cro-Mega LX ist mit unserem Megalite Aluminiumlenker, dem Oversize Chromoly Vorbau und der Megadrive Gabel ausgestattet. Ebenso zur Ausstattung dieses Bikes gehören hochgezogenen Kettenstreben mit 40,4 cm kurzem Hinterbau und gebogenem Sattelrohr — für maximale Traktion und Reifenfreiheit. Die gegossenen, rückwärtigen Ausfallenden sowie die Ritchey Reifen und Araya Felgen zeigen, mit welcher Liebe zum Detail dieses optimale Mountain Bike mit LX-Ausstattung geschaffen wurde.





## **A**lpine Xross™ LX

With its exceptional design, the Alpine Xross is a unique cross between a road bike and a mountain bike. To provide the highest level of performance for street or dirt, we used our Megasized Tubing, Megalite Aluminum Handlebars, and 16.5" chainstays. Equipped with Shimano LX, flat handlebars and Ritchey's newest 700 Series Tires, this bike lets *you* decide where to ride.

Avec son design exceptionnel, l'ALPINE X ROSS est un croisement entre un vélo de route et un mountain bike. Pour atteindre le plus haut niveau de performance sur la route et les chemins escarpés, nous utilisons les tubes megalized, le guidon mégalite aluminium et la longueur de base (16,5). Equipé avec le shimano LX, le guidon plat et les nouveaux pneus RITCHEY série 700, ce vélo vous laisse le choix de vos parcours.

Con il suo telaio innovativo, la Alpine Xross è una combinazione unica tra una bicicletta da strada e una mountain bike. Per assicurare le massime prestazioni su strada o fuori, abbiamo impiegato tubi oversize Megatubing, manubrio Megalite in alluminio, e un carro posteriore di soli 418 mm. Equipaggiata con componenti Shimano LX, manubrio diritto e pneumatici Ritchey della nuova serie 700, questa bicicletta ti lascia decidere dove andare, se su strada o fuoristrada.

Durch sein herausragendes Design ist das Alpine Xross Trekking Bike eine einzigartige Mischung aus einem Rennrad und einem Mountain Bike. Für beste Leistung auf der Straße und im Gelände verwendeten wir unser Megasize Rohr, Megalite Aluminiumlenker und Kettenstreben mit 42 cm Länge. Mit der Shimano LX Ausstattung, flachem Lenker und den neuesten Reifen der Ritchey 700-ter Serie entscheiden Sie, in welchem Terrain gefahren wird.





**T-24™**



Our T-24's represent a revolutionary design breakthrough in small bikes by offering a high-performance ride and fit never before available. To achieve this ideal fit, we reduced the standover height by combining a unique "zero stack" headset with our specially designed fork and our mono top/down tube configuration. The combination of these elements places the bars lower than the seat to properly position riders for improved aerodynamic performance. The T-24 embodies our team's absolute commitment to defining the small mountain bike of the future.



Le T 24, vélo révolutionnaire, crée à l'intention exclusive de gens de petite taille (ou enfants), est une première mondiale sur le marché.

Pour arriver à cette performance, nous avons réduit la longueur du tube de selle en combinant, jeu de direction "ZERO STACK," avec notre fourche spéciale et notre configuration de tube mono de haut en bas.

Le guidon se trouve donc plus bas que la selle afin de donner au pilote une position aérodynamique.

Notre team ALPINESTARS USA, avec le PETITE T 24, présente encore une fois le Mountain Bike de l'avenir!



La nostra T-24 rappresenta una vera rivoluzione nella progettazione della mountain bike di misura piccola. Il nostro tipo di telaio permette una posizione di guida ideale per il raggiungimento delle massime prestazioni con una guida confortevole. Per raggiungere questo, abbiamo ridotto l'altezza del tubo principale del telaio grazie al suo disegno innovativo, e adottando l'esclusivo movimento di sterzo "zero stack" abbinato alla forcella espressamente disegnata per questa configurazione di telaio. La combinazione di questi elementi permette di avere il manubrio posizionato più in basso della sella per una posizione più confortevole ed aerodinamica. La T-24 materializza l'impegno assoluto del team Alpinestars nel definire la mountain bike del futuro anche nelle dimensioni inferiori.

Unser T-24 stellt einen revolutionären Durchbruch im Design von Mountain Bikes mit kleinen Rahmenhöhen dar. Diese Bikes bieten ein Höchstmaß an Fahreigenschaften und Anpassungsmöglichkeiten, wie sie bislang kaum zu realisieren waren. Um diese ideale Anpassungsfähigkeit zu erzielen, reduzierten wir die Rahmenhöhe durch die Kombination eines einzigartigen "Zero Stack" — Steuersatzes mit unserer speziell entwickelten Gabel und unserer Einrohr-Rahmenkonstruktion. Die Kombination dieser Elemente führt dazu, daß das Niveau des Lenkers niedriger ist als das des Sattels. Auf diese Weise erzielt man eine aerodynamisch günstigere Fahrposition für eine bessere Leistungsentfaltung. Das T-24 verkörpert das absolute Engagement unseres Teams, das Mountain Bike der Zukunft mit niedriger Rahmenhöhe zu konstruieren.

**10**

## Alpine LX (300 LX)

In our quest for perfection, we understand that not all riders race. The Alpine LX was built to be the ultimate bike in its category. Like any product we create, it must be the very best possible for its use. That's why you'll find in this bike the same attention to detail and unique frame design.



Dans notre recherche de la perfection nous comprenons que tous les bikers ne sont pas des coureurs. L'ALPINE LX a été conçu pour être le vélo suprême dans sa catégorie. C'est pourquoi vous trouverez dans ce vélo la même perfection du détail et un design de cadre exceptionnel.

Ovviamente non tutti partecipano in competizioni. La Alpine LX è stata progettata per essere la migliore nella sua categoria. Come ogni altro prodotto che creiamo, deve essere il massimo per il suo uso. Per questo si trova in questa bicicletta la stessa attenzione ai dettagli ed un disegno del telaio esclusivo.

Bei unserem Streben nach Perfektion beachten wir auch, daß nicht alle Sportler Rennfahrer sind. Das Alpine LX ist ausgelegt als eines der besten seiner Klasse. Wie alle unsere Produkte muß auch dieses für seinen Zweck am besten geeignete sein. Und darum werden Sie auch an diesem Bike die gleiche Liebe zum Detail und das einzigartige Rahmendesign entdecken.

## Tools of the Trade

### 1-1/4" Oversize Headset Tools

- A. **Fork Crown Thread Die** - Designed for chasing and cutting threads on 1-1/4" steering columns.
- B. **Fork Crown Race Cutter** - This tool accurately cuts the fork crown to a precise 33.02 mm for 1-1/4" headsets, and mills and faces the race for correct headset performance.
- C. **Head Tube Facer and Reamer Set** - This high-quality tool faces and cuts the inner diameter of the head tube to 38.6 mm for a precision fit of 1-1/4" headset cups, and correctly aligns the headtube ends for proper fit and headset performance.
- D. **Slide Hammer** - For seating the fork crown race.
- E. **Rocket Tool** - Designed for removing 1-1/4" headcups from the headtube.
- F. **Headset Wrench** - For adjusting and tightening 1-1/4" headsets.

All Alpinestars USA cutting tools are Titanium Nitride coated to increase longevity and to decrease wear.

11

# Parts (of the Story)



## MEGALITE 7005 STEMS

Our Megalite stems are constructed of oversize 7005 Series aluminum tubing for the optimum combination of strength and light weight. Another unique feature is the clamp, which has been designed to accept our oversize (28.6mm) Megalite handlebar. Our stems have 5° of rise and are available in the following extensions: 100mm, 115mm, 130mm, 145mm, 160mm.



## CHROMOLY STEMS

Our oversize chromoly stems feature the same unique clamp design as our aluminum stems and work in conjunction with our Megalite bars.



## MEGALITE BARS

Our Megalite bars are designed with a new oversize 28.6mm center section and are designed to work in conjunction with our Megalite stem. The oversize design allows us to make an exceptionally light bar without sacrificing strength. Our bars are available in both 6061 and 7005 aluminum.



## STAINLESS-STEEL SEAT COLLAR

Our specially designed seat collar features an integral quick release and is made of investment cast stainless steel polished to perfection. It's designed to work with 35mm aluminum seat tubes.



## MEGALITE OVERSIZE 7005 ALUMINUM FORK

Our aluminum fork represents the latest technology in fork design. The oversize 7005 Series aluminum blades and cold forged aluminum dropouts yield an incredibly strong, lightweight fork.



## WATER BOTTLES

Available in both small and large sizes.

## WATER BOTTLE CAGE

We specially designed our cage to fit between the chainstays of our elevated frames.

“ ... the best mountain bike shoe we've seen — ”

— Mountain Bike Action magazine



#### SHOES FOR FAST FEET

Throughout the 1990 race season, Alpinestars USA's Team Issue earned their reputation as the world's premier high-performance off-road racing shoes. Our Team Issue features an upper made of genuine leather and nylon mesh, a Velcro heel retention device for positive energy transfer, and a Velcro-secured lace cover. It comes standard with cleats and stainless-steel spikes for use with traditional pedal systems. Another great advantage is its compatibility with Shimano's new clipless pedals. With features like these, it's no wonder Mountain Bike Action said "Alpinestars' new Team Issue shoe is the best mountain bike shoe we've seen — period."

#### CHAUSSURES CROSS TEAM

Au cours de la saison course 1990, le team ALPINESTARS USA, a acquis sa réputation dans le monde des chaussures tout terrain haute performance. • Notre modèle Team, est en cuir véritable et toile nylon aéré, avec un système velcro qui bloque le talon pour conserver la puissance et une double fermeture lacets et velcro. • La chaussure est livrée avec des cales pour les pédales traditionnelles. • Un autre avantage important est qu'elle est compatible avec les nouvelles cales de la pédale SHIMANO. • Avec des caractéristiques pareilles, on ne s'étonne pas, quand MOUNTAIN BIKE ACTION dit: "La nouvelle chaussure ALPINESTARS, résultat d'une recherche du Team course, est la meilleure chaussure de mountain bike que nous ayons vue!"

#### SCARPE PER PIEDI VINCENTI

Durante la stagione 1990, le Alpinestars USA Team Issue si sono guadagnate la reputazione di migliori scarpe da competizione al mondo. Le Team Issue presentano una tomaia in vera pelle e rete di nylon, un sistema di ritenzione del tallone per un sicuro trasferimento di energia, ed una copertura dei lacci chiusa con Velcro. La scarpa offre di serie le tacchette con chiodi in acciaio per l'uso con pedali tradizionali. Un altro grande vantaggio è la compatibilità con il nuovo sistema di attacco al pedale Shimano. Con tali caratteristiche, non sorprende che Mountain Bike Action abbia detto: "La Nuova Team Issue Alpinestars è la migliore scarpa da mountain bike che abbiamo mai visto — in assoluto."

#### SCHUHE FÜR SCHNELLE FÜßE

Die gesamte Rennsaison 1990 hindurch hat sich der Team Issue von Alpinestars USA als einer der weltweit führenden Hochleistungsschuhe für Offroadrennen bewährt. Das Obermaterial unseres Team Issues besteht aus einer Kombination aus Echtleider und Nylonnetz, einem Klettverschluss-Fersenrückhalt für optimale Energieübertragung und eine mit Klettverschluss gesicherte Decklasche. Serienmäßig werden Stollen und Edelstahl-Spikes für herkömmliche Pedale mitgeliefert. Ein zusätzlicher, großer Vorteil ist die Kompatibilität mit den neuen Clipless-MTB-Pedalen von Shimano. Bei dieser Vielzahl von Features ist es nicht verwunderlich, wenn die amerikanische Fachzeitschrift "Mountain Bike Action" schrieb: "Der neue Team Issue von Alpinestars ist der beste Mountain Bike Schuh, den wir je gesehen haben. Punktum."



13



# Racing Apparel

## MTN CROSS TEAM JACKET

Go in style on your cold-weather ride. Yellow or pink combo.



## MTN CROSS LYCRA TIGHTS

By combining the perfect fit with our Italian Sublimation — it never felt or looked this good.



## MTN CROSS HELMET COVER

Tops off the team look. One size fits all. Yellow or pink combo.



## MTN CROSS TEAM GLOVES

Long or short fingers with Lycra top and tery cloth thumb. It's a fantastic combination. Yellow or pink combo.

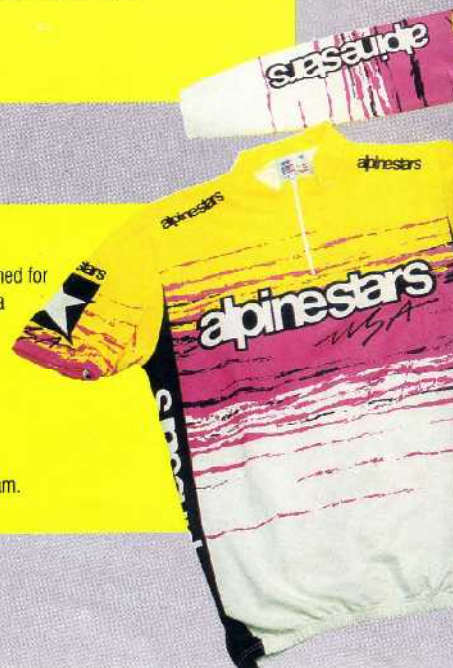


## MTN CROSS TEAM JERSEY

This quality Italian-made Jersey is designed for outstanding fit and function. It comes in a pink or yellow combo, offered in long or short sleeve.

## MTN CROSS TEAM SHORTS

These shorts are the ultimate in both form and function, and race-proven by our own Alpinestars USA MTN Cross Team.







**MTN XROSS LOGO JERSEY**

Not as wild on the graphics, but every bit the jersey. It comes in short sleeves with yellow or pink color combos.

**MTN XROSS LOGO SHORTS (LYCRA)**

Our logo shorts offer the same quality, fit, and durability as our team shorts. Yellow or pink combo.



**MTN XROSS CENTER**

The complete Alpinestars Mountain Xross Center is available — check with your local distributor.



**MTN XROSS T-SHIRTS**

Our original MTN Xross designs are quality screened front and back on 100% USA cotton.

- A-Star Logo (long or short sleeve)
- MTN Xross Action (long or short sleeve)
- Recreational Masochist (short sleeve)
- Built for Performance (short sleeve)

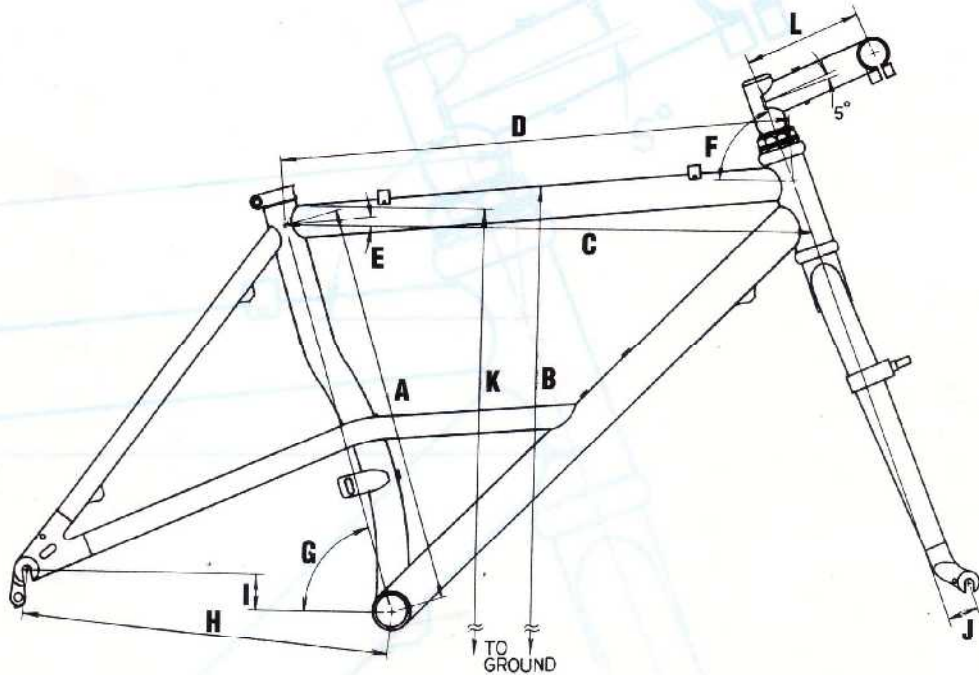


# Specifications

MODEL	Ti-Mega	Al-Mega XT	Al-Mega DX	Cro-Mega DX	Cro-Mega LX	Alpine Cross LX	Alpine LX
<b>FRAME SIZES</b>	38, 45, 48 & 52cm	32*, 38, 45, 48 & 52cm	32*, 38, 45, 48 & 52cm	32*, 38, 45, 48 & 52cm	32*, 38, 45, 48 & 52cm	46, 48 & 51cm	38, 45, 48 & 52cm
<b>FRAME MATERIAL</b>	Titanium	7005 Aluminum, TIG Welded Extruded Double Cable Stops	7005 Aluminum, TIG Welded Extruded Double Cable Stops	Double-Butted 4130 CR/MO with Investment Cast Dropouts & Cable Guides	4130 CR/MO with Investment Cast Dropouts & Cable Guides	4130 CR/MO Investment Cast Cable Guides, Forged Dropouts	4130 CR/MO Main Triangle
<b>FORK MATERIAL</b>	Alpinestars Titanium or 7005 Aluminum	7005 Aluminum, TIG Welded and Adhesive Joined with Cold-Forged Dropout	4130 CR/MO 28.6/25 Tapered Blades with Investment Cast Dropouts	4130 CR/MO 28.6/25 Tapered Blades with Investment Cast Dropouts	4130 CR/MO 28.6 Tapered Blades with Forged Ends	4130 CR/MO with Oval-Ed-Tapered Blades Investment Cast Ends	28.6 with Forged Ends
<b>HEADSET</b>	Tange Superlite 1.25x26 TPI	Tange Superlite 1.25x26 TPI	YST CS-707SW 1.25x26 TPI	YST CS-707SW 1.25x26 TPI	YST CS-707SW 1.25x26 TPI	YST CS-707SW 1.25x26 TPI	YST 8002 6BW 1x24 TPI
<b>BOTTOM BRACKET</b>	Alpinestars Titanium	Shimano M 730	Shimano BB-MT60	YST 611NWS Bolt Type Satin Finish	YST 611NWS Bolt Type Satin Finish	YST 611NWS Bolt Type Satin Finish	YST 611NW
<b>SEAT POST</b>	Alpinestars USA	Polygon 31.6 Black Anodized	Kalloy SP245 31.6 All Black Anodized	Kalloy SB246AB 29.4x300 All Black Anodized	Kalloy SP246AB 29.4x300 All Black Anodized	Kalloy SP246AB 29.4x300 All Black Anodized	Kalloy SP246A 26.8x300 Silver
<b>SEAT COLLAR</b>	Alpinestars Investment Cast Stainless Steel with Integral Q.R.	Alpinestars Investment Cast Stainless Steel with Integral Q.R.	Alpinestars Investment Cast Stainless Steel with Integral Q.R.	Cold Forged Aluminum Black Anodized	Cold Forged Aluminum Black Anodized	Cold Forged Aluminum Black Anodized	None (Welded on Binder)
<b>TIRES</b>	---	Ritchey Megabite Hard Drive 26x2.1, 60TPI, Presta Tube	Ritchey Megabite Hard Drive 26x2.1, 60TPI, Presta Tube	Ritchey Force Quad 26x1.9, 26TPI, Schraeder Valve	Ritchey Force Quad 26x1.9, 26TPI Schraeder Tube	Ritchey Megabite Hard Drive 700x40, 60TPI Schraeder Valve	Ritchey Force Quad 26x1.9, 26TPI Schraeder Tube
<b>RIMS</b>	---	Ritchey Vantage Comp 32" Silver	Ritchey Vantage Comp 32" Silver	Ritchey Vantage Expert 32" Silver	Araya VP20 36" Silver	Araya 16A(5)	Araya VP20
<b>SPOKES</b>	---	Stainless 14/15 Butted	14G UCP	14G UCP	14G UCP	14G UCP	14G UCP
<b>SADDLE</b>	---	Avocet R-1 Leather Covered	Avocet RV	Alpinestars Turbo Style	Alpinestars Turbo Style	Alpinestars Turbo Style	Alpinestars Turbo Style
<b>STEM</b>	Alpinestars Titanium or Aluminum Megalite	Alpinestars Megalite 7005 Aluminum, Sizes: 38/10.0, 45/11.5, 48/13.0, 52/14.5	Alpinestars Megalite 7005 Aluminum, Sizes: 38/10.0, 45/11.5, 48/13.0, 52/14.5	Alpinestars Megalite 7005 Aluminum, Sizes: 38/10.0, 45/11.5, 48/13.0, 52/14.5	Alpinestars Megalite CR/MO, Sizes: 38/10.0, 45/11.5, 48/13.0, 52/14.5	Alpinestars Megalite CR/MO, Sizes: 46/11.5, 48/13.0, 51/14.5	HL HE-115G CR/MO, Sizes: 38,45/12.0, 48/13.0, 52/15.0
<b>HANDLEBAR</b>	Alpinestars 28.6 Titanium or 7005 Aluminum Megalite	Alpinestars 28.6 Megalite 7005 Aluminum	Alpinestars 28.6 Megalite 6061 Aluminum	Alpinestars 28.6 Megalite 6061 Aluminum	Alpinestars 28.6 Megalite 6061 Aluminum	Alpinestars 28.6 Megalite 6061 Aluminum	HL MTB110 25.4
<b>GRIP</b>	---	Hex	Hex	Hex	Foam	Foam	Foam
<b>PEDALS</b>	---	Shimano Competition	Alpinestars SL by Wellgo	Alpinestars SL by Wellgo	Alpinestars SL by Wellgo	Shimano 400LX	Nylon
<b>TOE CLIPS</b>	---	Shimano with Nylon Straps	Victor 782 38/sm, 45.48/med, 52/fg, Nylon Straps	Victor VP762 32,38/sm, 45.48/med, 52/fg, Nylon Straps	Victor VP762 32,38/sm, 45.48/med, 52/fg, Nylon Straps	Victor VP762 Nylon 46.48/med, 51/fg, Nylon Straps	None
<b>COMPONENT GROUP</b>	---	Shimano XT	Shimano DX	Shimano DX	Shimano 400LX	Shimano 400LX	300LX
<b>CHAINRING SIZES</b>	---	24/36/46	26/36/46	26/36/46	28/38/48	28/38/48	28/38/48
<b>FREEHUB COG SIZES</b>	---	12-28 7-Speed	12-28 7-Speed	12-28 7-Speed	13-30 7-Speed	13-30 7-Speed	13-30 7-Speed
<b>HUB SPOKING</b>	---	32"	32"	32"	36"	36"	36"
<b>CRANK LENGTH</b>	---	32,38/170 45,48,52/175	32,38/170 45,48,52/175	32,38/170 45,48,52/175	32,38/170 45,48,52/175	175	175

\* The 32cm frame size uses the unique "T" frame style and several other non-standard features such as the "zero" stack headset, a clamping stem, and downsized forks and bars, in order to be particularly suited for the small, performance-oriented rider for whom the bike is intended. In all other respects an effort has been made to duplicate the components found on the larger frame sizes of each model.

# Frame Dimensions



## Ti-Mega (12.5 not available), Al-Mega XT, Al-Mega DX, Cro-Mega DX, Cro-Mega LX

SIZE	A	B	C	D	E	F	G	H	I	J	K	L
	SEAT TUBE (C-C)	STANDOVER (C OF TT)	TOP TUBE (effective)	TOP TUBE (actual)	TOP TUBE SLOPE	HEAD ANGLE	SEAT ANGLE	CHAINSTAY LENGTH	DROP	FORK OFFSET	SECONDARY STANDOVER	STEM LENGTH
12.5	317	628	540	520	N.A.	69.5°	75°	408	44.5	44	525	100
15	381	728	559	529	12°	69.5°	75°	403	44	39	671	100
17.5	445	768	578	560	5.5°	70.2°	74.2°	403	38	39	739	115
19	483	797	597	595	4°	70.8°	73.4°	403	38	39	773	130
20.5	521	825	616	612	1°	71.5°	72.5°	403	32	39	820	145

## Alpine Xross LX

SIZE	A	B	C	D	E	F	G	H	I	J	K	L
	SEAT TUBE (C-C)	STANDOVER (C OF TT)	TOP TUBE (effective)	TOP TUBE (actual)	TOP TUBE SLOPE	HEAD ANGLE	SEAT ANGLE	CHAINSTAY LENGTH	DROP	FORK OFFSET	SECONDARY STANDOVER	STEM LENGTH
18	457	768	559	543	5.8°	71.5°	74.5°	419	56	56	732.5	115
19	482	793	578	562.5	5.5°	72°	74°	419	52	56	769	130
20	508	820	597	584	4.5°	72.5°	73.5°	419	48	56	796	145

## Alpine LX

SIZE	A	B	C	D	E	F	G	H	I	J	K	L
	SEAT TUBE (C-C)	STANDOVER (C OF TT)	TOP TUBE (effective)	TOP TUBE (actual)	TOP TUBE SLOPE	HEAD ANGLE	SEAT ANGLE	CHAINSTAY LENGTH	DROP	FORK OFFSET	SECONDARY STANDOVER	STEM LENGTH
15	381	728	559	529	12°	69.5°	75°	419	44	39	671	120
17.5	445	768	578	560	5.5°	70.2°	74.2°	419	38	39	739	130
19	483	797	597	595	4°	70.8°	73.4°	419	38	39	773	130
20.5	521	825	616	612	1°	71.5°	72.5°	419	32	39	820	145

1. Top tube effective measured from seat tube/top tube intersection to head tube centerline parallel to the ground.
2. Top tube actual measured from seat tube centerline to head tube centerline parallel to top tube.
3. Standover measured from ground to top of tube halfway between head tube and seat tube.
4. Secondary standover measured from ground to lowest point on top of top tube.

# Worldwide Distribution Network



## USA

Alpinestars USA  
4145 Sante Fe Road, Bldg. 2  
San Luis Obispo, CA 93401  
Tel 805/549-0597  
Fax 805/549-0599



## Germany

Pro Bike GmbH  
Im Starkfeld 47  
7910 Neu-Ulm  
Germany



## Italy

Stardue SRL  
Via Marosticana, 12  
31010 Coste di Maser (Treviso)  
Tel (39) 0423/546-143  
Fax (39) 0423/546-056



## Spain

Moto-Bike S.A.  
c/ Brusí, 36-38  
08006 Barcelona  
Tel (34) 3/414-0303  
Fax (34) 3/202-1969



## Austria

F. Barisitz  
Sportartikel-Vertrieb  
Bernhard-Hoefel-Strasse 14  
A-6020 Innsbruck  
Tel (43) 512/492-287  
Fax (43) 512/492-16635



## England

Alpine Racing (UK) Ltd.  
Unit 8, Severn Bridge  
Industrial Estate  
Portskewett, Newport Gwent,  
NP6 4YT  
Tel (44) 0291/421-885  
Fax (44) 0291/422-072



## Holland

Motorama B.V.  
Berkenwoudestraat 14  
3076 Ja Rotterdam  
Holland — The Netherlands  
Tel (31) 10/492-8600  
Fax (31) 10/492-8606



## Sweden

Kurt Grahn Motor AB  
Box 925  
591 29 Motala  
Tel (46) 141/545-80  
Fax (46) 141/131-58



## Switzerland

Fun-X Diffusion SA  
Z.A. Chable-Croix  
1860 Aigle  
Tel (41) 25/26 52 73  
Fax (41) 25/26 59 53



## Canada

FMH (Canada) Ltd.  
463 Applewood Crescent  
Concord, Ontario L4K4J3  
Tel 416/660-3226  
Fax 416/660-7468



## France

Crestline International  
Z.A. Braye de Cau  
13821 La Penne Sur Huveaune  
Tel (33) 91/248-786  
Fax (33) 91/247-815



## Norway

A/S Norge-Ski  
P.O. Box 67  
0701 Oslo 7  
Tel (47) 02/502-990  
Fax (47) 02/525-300



## Alpinestars USA Euro Office

13, Chemin du Paradis  
73202 Albertville  
Tel (83) 79/371-410  
Fax (33) 79/370-900



## Japan

RS Taichi Inc  
3-1-25 Nakagaite, Daito  
Osaka 574  
Tel (81) 0720/74-3268  
Fax (81) 0720/74-3385

Nichinso  
6-16-8 Sotokanda, Chiyodaku  
Tokyo 101  
Tel (81) 03/832-6251  
Fax (81) 03/832-6266



## THE ALPINESTARS USA WARRANTY

Alpinestars USA warrants this new Alpinestars bicycle frame and fork against defects in materials and workmanship for the lifetime of the original owner. Alpinestars USA further warrants all original parts for a period of one year from the date of original purchase. This warranty is expressly limited to the repair or replacement of a defective frame, fork, or part, and is the sole remedy of the warranty.

Claims under this warranty must be made through an authorized Alpinestars USA dealer. To claim a warranty, proof of purchase is required.

This warranty does not cover damage or failure due to abuse, neglect, accident, improper assembly or maintenance, normal wear and tear, or installation of parts or accessories not originally intended or incompatible with the bicycle as sold.

Alpinestars USA shall not be responsible for incidental or consequential damage. The user assumes the risk of any and all personal injury, or damage of the bicycle, or other losses if Alpinestars USA bicycles are used at anytime in any competitive event (including bicycle racing, or bicycle motocross, dirt biking, freestyle, or similar activities, or training for such activities); or altered any way inconsistent with the bicycle's original design purpose; or anything other than normal use. This limited warranty gives you specific legal rights; you may also have other rights which vary from state to state.